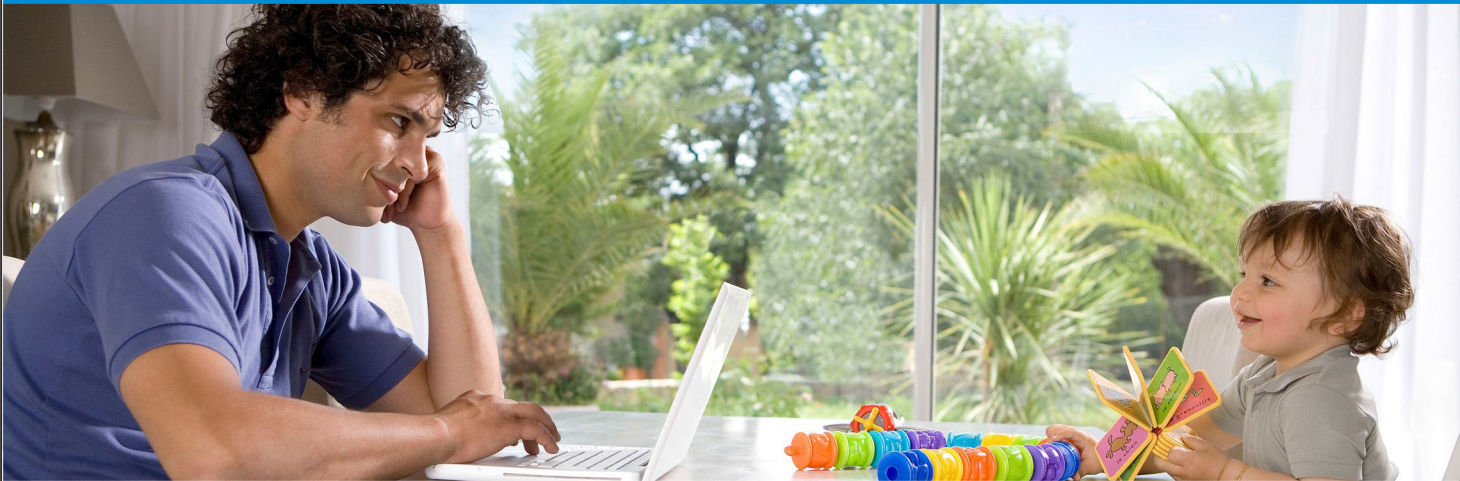


IQ[®]



LIGHT
comercial

www.iqairconditioners.co.za

Ceiling&Floor



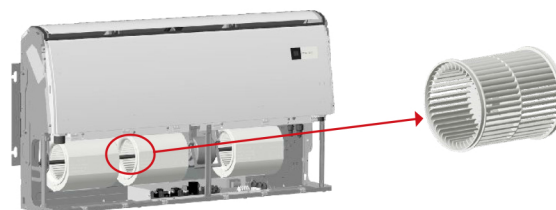
Anti-condensation

Flocking design, good thermal insulation effect, avoid large temperature difference, anti-condensation



Bigger Air Flow Volume

Innovative centrifugal fan with larger diameter, supply bigger air flow volume and lower noise.



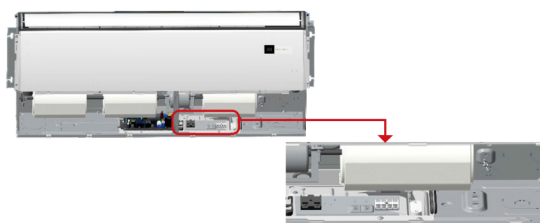
Fresh air

Fresh air intake design to improve air quality.



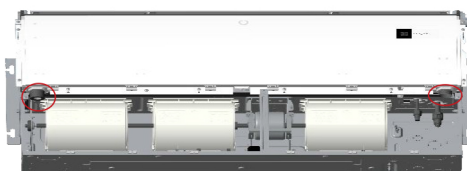
The independent electric box lid

Easy to connect power line and controller line don't need to disassemble the electric box lid when installation

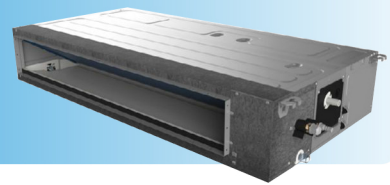


Easy drainage

Left and right water outlet design of water connection plate, flexible for installation site.

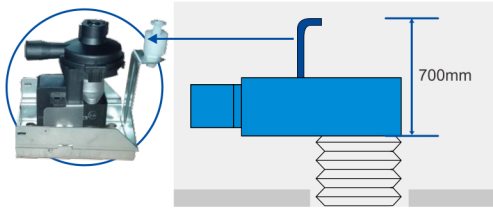


Mid ESP Duct



Built-In Drain Pump (Optional)

The built-in drain pump can lift condensation water up to 700mm high from the drainage pan.



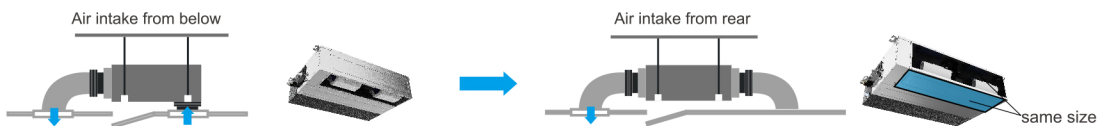
High Static-Pressure

Adjustable static pressure from 0 Pa to maximum 160Pa.



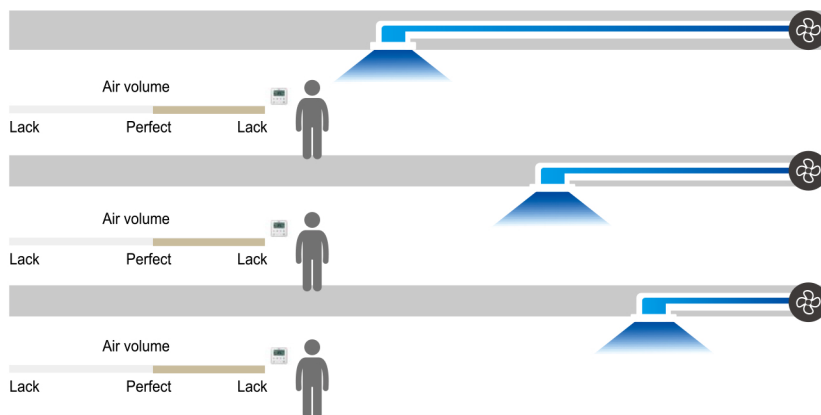
Flexible Installation

Air intake from rear as standard, from bottom is optional. The size of the plate from bottom is the same as the flange from back, which makes it convenient to change installation style due to different decoration requirements.



Self-adaptation technology

Automatic ESP Adjustment function will adapt the unit to any ducting with optimized air volume and minimized noise level automatically, making more comfortable in any situation.



Ceiling & Floor



Model	Indoor		IQ-H18IUC-1	IQ-H24IUC-1	IQ-H36IUC-1	IQ-H48IUC-3	IQ-H60IUC-3
	Outdoor		IQ-H18IUC-1	IQ-H24IUC-1	IQ-H36IUC-1	IQ-H48IUC-3	IQ-H60IUC-3
Capacity	Cooling/Heating	Btu/h	18000(5200~19100) /19100(4800~20300)	24000(7400-25590) /25590(6755-25930)	36000(12280~37530) /39880(9210~40940)	47800(14300~51600) /50200(15700~59700)	55000(16400~59000) /58000(16700~67600)
		KW	5.28(1.53~5.61) /5.60(1.40~5.94)	7.00(2.16-7.50) /7.50(1.98-7.60)	10.55(3.60~11.00) /11.69(2.70~12.00)	14.00(4.20~15.12) /14.70(4.60~17.50)	16.1(4.80~17.30) /17(4.90~19.80)
Electric Data	Power Supply	V~,Hz,Ph	220-240V~,50,1	220-240V~,50,1	220-240V~,50,1	380-415V~,50,3	380-415V~,50,3
	Cooling/Heating Power Input	kW	1.63(0.47~2.05) /1.47(0.46~2.01)	2.20(0.67~2.70) /2.35(0.65~2.65)	3.43(0.93~3.80) /3.14(0.95~3.56)	5.37(1.29~7.50) /4.70(1.26~7.00)	6.3(1.49~7.80) /5.8(1.49~7.20)
Performance	EER/COP	W/W	3.24/3.80	3.18/3.19	3.08/3.72	2.60/3.13	2.56/2.93
	Air Flow Volume	m³/h	950/700/560	1550/1250/1050	1580/1280/1080	2040/1740/1440	2070/1770/1470
	Sound Pressure Noise Level	dB(A)	44/41/35	50/44/39	50/44/39	55/49/45	55/49/45
	Sound Power Noise Level	dB(A)	53/49/45	60/54/49	60/54/49	64/58/53	64/58/53
Dimension (W×D×H)	Net	mm	1000×690×235	1280×690×235	1280×690×235	1600×690×235	1600×690×235
	Packing	mm	1080×770×325	1360×770×325	1360×770×325	1680×770×325	1680×770×325
Weight	Net/Gross	kg	29/33	36/42	36/42	41/45	41/45
Piping size	Drainage	mm(inch)	DN20(R3/4)	DN20(R3/4)	DN20(R3/4)	DN20(R3/4)	DN20(R3/4)
Applicable Area		m²	21-35	28-47	40-65	56-93	64-107
Stuffing Quantity	20/40/40H	set	56/115/132	42/90/94	30/65/83	24/50/55	24/50/55



Mid ESP Duct

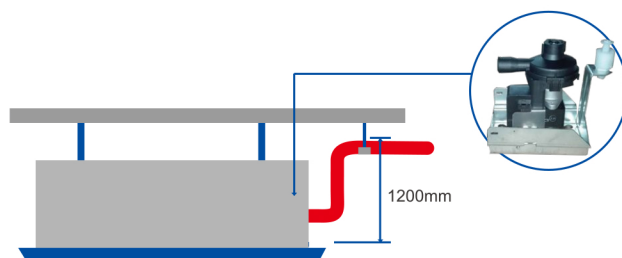
Model	Indoor		IQ-H12IHD-1	IQ-H18IHD-1	IQ-H24IHD-1	IQ-H36IHD-1	IQ-H48IHD-3	IQ-H60IHD-3
	Outdoor		IQ-H12IHD-1	IQ-H18IHD-1	IQ-H24IHD-1	IQ-H36IHD-1	IQ-H48IHD-3	IQ-H60IHD-3
Capacity	Cooling/Heating	Btu/h	12000(2050~13300) /13000(2390~14670)	18000(5200~19100) /19100(4800~20300)	24000(7400-25590) /25590(6755-25930)	36000(12280~37530) /39880(9210~40940)	48000(14330~51860) /52000(15700~59710)	55000(16380~59030) /63500(16720~67560)
		KW	3.52(0.60~3.90) /3.81(0.70~4.30)	5.28(1.53~5.61) /5.60(1.40~5.94)	7.00(2.16-7.50) /7.50(1.98-7.60)	10.55(3.60~11.00) /11.69(2.70~12.00)	14.06(4.20~15.12) /15.24(4.60~17.50)	16.12(4.80~17.30) /18.61(4.90~19.80)
Electric Data	Power Supply	V~,Hz,Ph	220-240V~,50,1	220-240V~,50,1	220-240V~,50,1	220-240V~,50,1	380-415V~,50,3	380-415V~,50,3
	Cooling/Heating Power Input	kW	1.14(0.30~1.40) /1.19(0.25~1.30)	1.65(0.47~2.05) /1.55(0.46~2.01)	2.20(0.67~2.70) /2.35(0.65~2.65)	3.50(0.93~3.80) /3.14(0.95~3.56)	5.02(1.29~7.50) /5.01(1.26~7.00)	5.97(1.49~7.80) /6.08(1.49~7.20)
Performance	EER/COP	W/W	3.10/3.20	3.20/3.61	3.18/3.19	3.01/3.72	2.80/3.04	2.70/3.06
	Air Flow Volume	m³/h	620/570/350	1000/800/680	1500/1250/950	1500/1250/950	1900/1600/1400	2030/1880/1670
	Sound Pressure Noise Level	dB(A)	32/29/27	43/41/40	46/44/41	46/44/41	53/50/44	53/50/44
	Sound Power Noise Level	dB(A)	42/39/37	52/49/47	56/54/51	56/54/51	65/60/53	65/60/53
	Esp	Pa	0-30	0-160	0~160	0~160	0-120	0-120
Dimension (W×D×H)	Net	mm	700X450X200	1000X700X245	1000×700×245	1000×700×245	1400X700X245	1400X700X245
	Packing	mm	1010X580X280	1230X830X300	1230×830×300	1230×830×300	1630X830X300	1630X830X300
Weight	Net/Gross	kg	18/21	29/34	32/36	32/36	47/54	47/54
Piping size	Drainage	mm(inch)	DN20(R3/4)	DN20(R3/4)	DN20(R3/4)	DN20(R3/4)	DN20(R3/4)	DN20(R3/4)
Applicable Area		m²	18-26	21-35	28-47	40-65	56-93	64-107
Stuffing Quantity	20/40/40H	set	42/102/122	46/97/112	42/89/99	38/72/83	22/49/55	22/49/55

Cassette



Built-In Drain Pump

The built-in drain pump can lift condensation water up to 1200mm high from the drainage pan.



Optional Panels



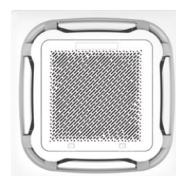
Type A



Type B



Type C



Type D



Fresh Air Intake

Fresh air makes indoor air healthy and comfortable.



Fresh air intake



Outdoor Unit

Model	Outdoor		IQ-H12IHD-1	IQ-H18IHD-1	IQ-H24IHD-1	IQ-H36IHD-1	IQ-H48IHD-3	IQ-H60IHD-3
Electric Data	Power Supply	V~,Hz,Ph	220-240V~,50,1	220-240V~,50,1	220-240V~,50,1	220-240V~,50,1	380-415V~,50,3	380-415V~,50,3
Performance	Air Flow Volume	m ³ /h	2200	2600	3000	4300	7000	7000
	Sound Pressure Noise Power Level	dB(A)	52	54	58	58	60	60
Dimension (W×D×H)	Net	mm	709×536×280	785×300×555	825×310×655	900×350×700	940×370×1325	940×370×1325
	Packing	mm	810×330×570	888×367×590	945×435×725	1020×430×770	1080×430×1440	1080×430×1440
Weight	Net/Gross	kg	23/27	29/31	41/44	50/54	90/100	90/100
Piping size	Liquid Side	mm	6.35(1/4)	6.35(1/4)	9.52	9.52	9.52(3/8)	9.52(3/8)
	Gas Side	mm	9.52(3/8)	12.7(1/2)	15.88	15.88	19.05(3/4)	19.05(3/4)
	Max. Length	m	20	30	30	30	50	50
	Max. Height	m	15	15	15	15	30	30
Stuffing Quantity	20/40/40H	unit	102/219/292	152/310/310	87/183/183	102/204/204	27/55/55	27/55/55



Cassette

Model	Indoor		IQ-H18ICA-1	IQ-H24ICA-1	IQ-H36ICA-1	IQ-H48ICA-3	IQ-H60ICA-3
	Outdoor		IQ-H18ICA-1	IQ-H24ICA-1	IQ-H36ICA-1	IQ-H48ICA-3	IQ-H60ICA-3
Capacity	Cooling/Heating	Btu/h	18000(5200~19100)/19100(4800~20300)	24000(7400~25590)/25590(6755~25930)	36000(12280~37530)/39880(9210~40940)	48000(14300~51900)/52000(15700~59700)	55000(16400~59000)/63500(16700~67600)
		KW	5.28(1.53~5.61)/5.60(1.40~5.94)	7.00(2.16~7.50)/7.50(1.98~7.60)	10.55(3.60~11.00)/11.69(2.70~12.00)	14.06(4.20~15.12)/15.24(4.6~17.5)	16.12(4.80~17.30)/18.61(4.90~19.80)
Electric Data	Power Supply	V~,Hz,Ph	220-240V~,50,1	220-240V~,50,1	220-240V~,50,1	380-415V~,50,3	380-415V~,50,3
	Cooling/Heating Power Input	kW	1.70(0.47~2.05)/1.55(0.46~2.01)	2.20(0.67~2.70)/2.35(0.65~2.65)	3.43(0.93~3.80)/3.14(0.95~3.56)	5.02(1.21~7.5)/5.01(0.92~7.00)	5.97(1.38~7.80)/6.08(0.98~7.20)
Performance	EER/COP	W/W	3.1/3.61	3.18/3.19	3.08/3.72	2.8/3.04	2.70/3.06
	Air Flow Volume	m ³ /h	800/700/630	1500/1250/850	1500/1250/850	1800/1550/1350	1930/1650/1450
	Sound Pressure Noise Level	dB(A)	45/42/39	48/45/41	48/45/41	52/47/41	55/49/45
	Sound Power Noise Level	dB(A)	55/51/47	60/55/50	60/55/50	62/58/52	62/58/52
Dimension (W×D×H)	Net(Body)	mm	570×570×260	840×840×246	840×840×246	840×840×288	840×840×288
	Packing(Body)	mm	720×650×290	910×910×310	910×910×310	910×910×350	910×910×350
	Net(Panel)	mm	650×650×55	950×950×55	950×950×55	950×950×55	950×950×55
	Packing(Panel)	mm	710×710×80	1000×1000×100	1000×1000×100	1000×1000×100	1000×1000×100
Weight	Net/Gross(Body)	kg	16/18.5	26/30	26/30	31/35	31/35
	Net/Gross(Panel)	kg	2.2/3.7	5.3/7.8	5.3/7.8	5.7/8.3	5.7/8.3
Piping size	Drainage	mm(inch)	DN20(R3/4)	DN20(R3/4)	DN20(R3/4)	DN20(R3/4)	DN20(R3/4)
Applicable Area		m ²	21-35	28-47	40-65	56-93	64-107
Stuffing Quantity	20/40/40H	set	72/152/180	42/84/95	36/78/88	26/54/55	26/54/55