



IQ[®]



Light commercial



8 ways Cassette



01 Standard Build-in Drain Pump

Convenient installation by build in drain pump. Max. pumping height is up to 750mm.



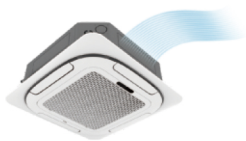
02 LED Digital Display

Real-time operating temp. Easy maintenance with clear display of faults code.



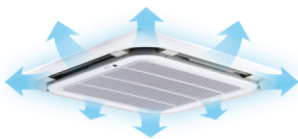
03 Reserved Fresh air Connection port

Healthier indoor air. Connecting the fresh air port to increase the fresh air for the indoor.



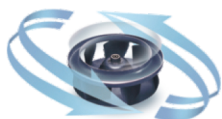
04 360° Round Airflow

Comfortable air supply. 8 ways air-outlet ensure the wind covers all areas.



05 Ultra-low Noise

3D propeller design helps decreasing the resistance of the wind drag to reduce the noise outstandingly.



06 Wi-Fi control Smart Home Solution

Optional Wi-Fi module. Smart App control. Comfortable & Convenient Smart Home experience.



R410A

INVERTER COOLING & HEATING



8 ways Cassette

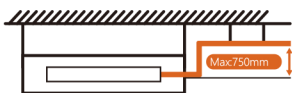
Indoor Unit Model			IQ-H18ICA-1/T-I	IQ-H24ICA-1/T-I	IQ-H30ICA-1/T-I	IQ-H36ICA-1/T-I	IQ-H48ICA-3/T-I	IQ-H60ICA3/T-I
Power Supply		V/Hz/Ph	220-240V~ 50Hz/1P	220-240V~ 50Hz/1P	220-240V~ 50Hz/1P	220-240V~ 50Hz/1P	220-240V~ 50Hz/1P	220-240V~ 50Hz/1P
Cooling	Capacity	btu/h	18000 (6200-18600)	24000 (8550-25400)	30000 (10600-31400)	36000 (12550-37500)	48000 (16700-50150)	55000 (19100-57300)
	Capacity	W	5270 (1820-5460)	7030 (2500-7450)	8800 (3100-9200)	10550 (3680-11000)	14060 (4900-14700)	16120 (5600-16800)
	Power consumption	W	2100 (500-2275)	2510 (980-2620)	2750 (990-3310)	3500 (1200-3730)	5020 (1530-5770)	5370 (1770-6180)
	Operating current	A	9.2(2.3-10.4)	11.5(4.5-12)	12.6(4.5-15.1)	16.0(5.5-16.1)	7.6(2.6-8.8)	8.2(3.0-9.4)
Heating	Capacity	btu/h	19500 (6800-20400)	26000 (8800-27200)	32000 (11450-34100)	39400 (13800-41300)	52500 (18400-54950)	58000 (20300-63800)
	Capacity	W	5700 (2000-5980)	7600 (2660-7980)	9370 (3350-10000)	11550 (4050-12100)	15400 (5400-16100)	17000 (5950-18700)
	Power consumption	W	1650 (550-2490)	2375 (1050-2840)	2755 (990-3010)	3600 (1200-3750)	4810 (1650-5690)	5310 (1880-6180)
	Operating current	A	10(2.5-11.4)	10.8(4.8-13)	12.6(4.5-13.8)	16.5(5.5-16.1)	7.3(2.8-8.6)	8.1(3.2-9.4)
Air Circulation (Cooling/Heating)		m ³ /h	1000	1300	1600	1600	2000	2000
Sound Power(H/M/L)		dB(A)	39/38/27	44/41/37	49/47/44	49/47/44	51/48/45	51/48/45
Indoor	Unit (WxHxD)	mm	840×840×245	840×840×245	840×840×245	840×840×245	840×840×290	840×840×290
	Packing (WxHxD)	mm	935×935×305	935×935×305	935×935×305	935×935×305	935×935×350	935×935×350
Panel	Unit (WxHxD)	mm	950×950×45	950×950×45	950×950×45	950×950×45	950×950×45	950×950×45
	Packing (WxHxD)	mm	1035×1035×80	1035×1035×80	1035×1035×80	1035×1035×80	1035×1035×80	1035×1035×80
Refrigerant Pipe	Gas	Inches	1/2"	1/2"	5/8"	5/8"	5/8"	5/8"
		mm	12.7	12.7	15.88	15.88	15.88	15.88
	Liquid	Inches	1/4"	1/4"	3/8"	3/8"	3/8"	3/8"
		mm	6.35	6.35	9.52	9.52	9.52	9.52
Communication Cables (CorexSize)		/	3×1.0mm ²	3×1.0mm ²	3×1.0mm ²	3×1.0mm ²	3×1.0mm ²	3×1.0mm ²
Power Cables (CorexSize)		/	3×2.5mm ²	3×2.5mm ²	3×2.5mm ²	3×2.5mm ²	5×1.0mm ²	5×1.0mm ²
Application area		m ²	20-35	27-45	33-58	39-71	50-95	55-105
Ambient temperature range		°C	Cooling:17-32 Heating:0-30	Cooling:17-32 Heating:0-30	Cooling:17-32 Heating:0-30	Cooling:17-32 Heating:0-30	Cooling:17-32 Heating:0-30	Cooling:17-32 Heating:0-30
Net Weight (Indoor)		kg	21.5	23	24	24	30	30
Gross Weight (Indoor)		kg	25.5	28	29	28	35	36
Net Weight (Panel)		kg	6	6	6	6	6	6
Gross Weight (Panel)		kg	9	9	9	9	9	9

Duct



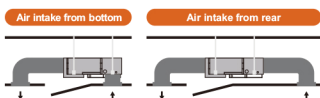
01 Optional Build-in Drain Pump

Optional drain pump. To satisfy various needs. Max. pumping height is up to 750mm.



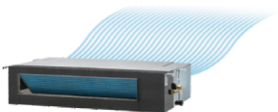
02 Air intake Flexible Installation

Provide flexible ways to adapt various installation. Air inlet can be positioned either from bottom or rear.



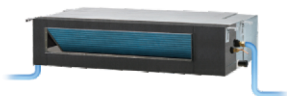
03 Reserved Fresh air Connection port

Healthier indoor air. Connecting the fresh air port to increase the fresh air for the indoor.



04 Alternative Drainage position

Flexible installation. Choose the suitable side of the drainage position.



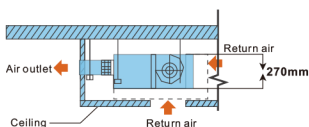
05 Ultra-low Noise

3D propeller design helps decreasing the resistance of the wind drag to reduce the noise outstandingly.



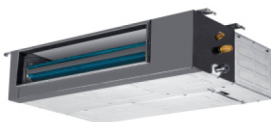
06 Elegance Slim design

Slim design of 270mm. Reduce the ceiling's height. Save more space.



R410A

INVERTER COOLING & HEATING



MSP Duct

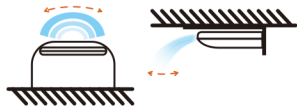
Indoor Unit Model			IQ-H18IHD-1/T-I	IQ-H24IHD-1/T-I	IQ-H30IHD-1/T-I	IQ-H36IHD-1/T-I	IQ-H48IHD-3/T-I	IQ-H60IHD-3/T-I
Power Supply		V/Hz/Ph	220-240V~50Hz/1P	220-240V~50Hz/1P	220-240V~50Hz/1P	220-240V~50Hz/1P	220-240V~50Hz/1P	220-240V~50Hz/1P
Cooling	Capacity	btu/h	18000 (6200~18600)	24000 (8550~25400)	30000 (10600~31400)	36000 (12550~37500)	48000 (16700~50150)	55000 (19100~57300)
	Capacity	W	5270 (1820~5460)	7030 (2500~7450)	8800 (3100~9200)	10550 (3680~11000)	14060 (4900~14700)	16120 (5600~16800)
	Power consumption	W	2250 (500~2275)	2510 (980~2620)	2750 (990~3310)	3500 (1200~3730)	5020 (1530~5770)	5370 (1770~6180)
	Operating current	A	9.6(2.3~10.4)	11.5(4.5~12)	12.6(4.5~15.1)	16.0(5.5~16.1)	7.6(2.6~8.8)	8.2(3.0~9.4)
Heating	Capacity	btu/h	19500 (6800~20400)	26000 (6800~27200)	32000 (11450~34100)	39400 (13800~41300)	52500 (18400~54950)	58000 (20300~63800)
	Capacity	W	5700 (2000~5980)	7600 (2660~7980)	9370 (3350~10000)	11550 (4050~12100)	15400 (5400~16100)	17000 (5950~18700)
	Power consumption	W	1900 (550~2490)	2375 (1050~2840)	2755 (990~3010)	3600 (1200~3750)	4810 (1650~5690)	5310 (1880~6180)
	Operating current	A	10(2.5~11.4)	10.8(4.8~13)	12.6(4.5~13.8)	16.5(5.5~16.1)	7.3(2.8~8.6)	8.1(3.2~9.4)
Air Circulation (Cooling/Heating)		m ³ /h	850	1100	1500	1500	2200	2200
External Static Pressure(Rated)		Pa	25	25	37	37	50	50
External Static Pressure(Range)		Pa	0~50	0~50	0~80	0~80	0~120	0~120
Sound Power(H/M/L)		dB(A)	38/36/35	40/39/36	46/44/40	47/44/40	49/45/42	49/45/42
Indoor	Unit (WxHxD)	mm	920×210×570	920×210×570	920×270×570	1140×270×710	1200×800×300	1200×800×300
	Packing (WxHxD)	mm	1115x280x690	1115x280x690	1120×341×690	1341×341×830	1400x920x371	1400x920x371
Refrigerant Pipe	Gas	Inches	1/2"	1/2"	5/8"	5/8"	5/8"	5/8"
		mm	12.7	12.7	15.88	15.88	15.88	15.88
	Liquid	Inches	1/4"	1/4"	3/8"	3/8"	3/8"	3/8"
		mm	6.35	6.35	9.52	9.52	9.52	9.52
Communication Cables (CorexSize)		/	3×1.0mm ²	3×1.0mm ²	3×1.0mm ²	3×1.0mm ²	3×1.0mm ²	3×1.0mm ²
Power Cables (CorexSize)		/	3×2.5mm ²	3×2.5mm ²	3×2.5mm ²	3×2.5mm ²	5×1.0mm ²	5×1.0mm ²
Application area		m ²	20~35	27~45	33~58	39~71	50~95	55~105
Ambient temperature range		°C	Cooling:17-32 Heating:0-30	Cooling:17-32 Heating:0-30	Cooling:17-32 Heating:0-30	Cooling:17-32 Heating:0-30	Cooling:17-32 Heating:0-30	Cooling:17-32 Heating:0-30
Net Weight (Indoor)		kg	21.5	22	26	37	44	44
Gross Weight (Indoor)		kg	26.5	27	31	41	50	51

Ceiling&Floor



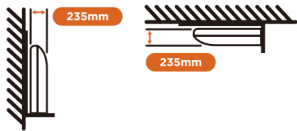
01 Air Flow Wide range

Unique swing design.
The temperature of the room can be equally distributed.



02 Flexible Installation

It can be installed either on the ceiling or the floor to accommodate a wide range of indoor designs.



03 LED Digital Display

Real-time operating temp.
Easy maintenance with clear display of faults code.



04 Alternative Drainage position

Flexible installation.
Choose the suitable side of the drainage position.



05 Elegance Slim design

Slim design of 235mm.
Reduce the ceiling's height.
Save more space.



06 Wi-Fi control Smart Home Solution

Optional Wi-Fi module.
Smart App control.
Comfortable & Convenient
Smart Home experience.



R410A

INVERTER COOLING & HEATING

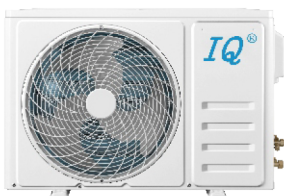


Floor & Ceiling

Indoor Unit Model			IQ-H18IUC-1/T-I	IQ-H24IUC-1/T-I	IQ-H30IUC-1/T-I	IQ-H36IUC-1/T-I	IQ-H48IUC-3/T-I	IQ-H60IUC-3/T-I
Power Supply		V/Hz/Ph	220-240V~50Hz/1P	220-240V~50Hz/1P	220-240V~50Hz/1P	220-240V~50Hz/1P	220-240V~50Hz/1P	220-240V~50Hz/1P
Cooling	Capacity	btu/h	18000 (6200~18600)	24000 (8550~25400)	30000 (10600~31400)	36000 (12550~37500)	48000 (16700~50150)	55000 (19100~57300)
	Capacity	W	5270 (1820~5460)	7030 (2500~7450)	8800 (3100~9200)	10550 (3680~11000)	14060 (4900~14700)	16120 (5600~16800)
	Power consumption	W	2150 (500~2275)	2510 (980~2620)	2750 (990~3310)	3500 (1200~3730)	5020 (1530~5770)	5370 (1770~6180)
	Operating current	A	9.2(2.3~10.4)	11.5(4.5~12)	12.6(4.5~15.1)	16.0(5.5~16.1)	7.6(2.6~8.8)	8.2(3.0~9.4)
Heating	Capacity	btu/h	19500 (6800~20400)	26000 (6800~27200)	32000 (11450~34100)	39400 (13800~41300)	52500 (18400~54950)	58000 (20300~63800)
	Capacity	W	5700 (2000~5980)	7600 (2660~7980)	9370 (3350~10000)	11550 (4050~12100)	15400 (5400~16100)	17000 (5950~18700)
	Power consumption	W	1650 (550~2490)	2375 (1050~2840)	2755 (990~3010)	3600 (1200~3750)	4810 (1650~5690)	5310 (1880~6180)
	Operating current	A	10(2.5~11.4)	10.8(4.8-13)	12.6(4.5-13.8)	16.5(5.5~16.1)	7.3(2.8~8.6)	8.1(3.2~9.4)
Air Circulation (Cooling/Heating)		m ³ /h	900	1200	1600	1600	2000	2000
Sound Power(H/M/L)		dB(A)	43/40/39	49/43/40	53/50/48	53/50/48	52/49/47	52/49/47
Indoor	Unit (WxHxD)	mm	1055x675x235	1055x675x235	1275x675x235	1275x675x235	1635x675x235	1635x675x235
	Packing (WxHxD)	mm	1130x748x305	1130x748x305	1350x748x305	1350x748x305	1710x748x305	1710x748x305
Refrigerant Pipe	Gas	Inches	1/2"	1/2"	5/8"	5/8"	5/8"	5/8"
		mm	12.7	12.7	15.88	15.88	15.88	15.88
	Liquid	Inches	1/4"	1/4"	3/8"	3/8"	3/8"	3/8"
		mm	6.35	6.35	9.52	9.52	9.52	9.52
Communication Cables (CorexSize)		/	3×1.0mm ²	3×1.0mm ²	3×1.0mm ²	3×1.0mm ²	3×1.0mm ²	3×1.0mm ²
Power Cables (CorexSize)		/	3×2.5mm ²	3×2.5mm ²	3×2.5mm ²	3×2.5mm ²	5×1.0mm ²	5×1.0mm ²
Application area		m ²	20~35	27~45	33~58	39~71	50~95	55~105
Ambient temperature range		°C	Cooling:17-32 Heating:0-30	Cooling:17-32 Heating:0-30	Cooling:17-32 Heating:0-30	Cooling:17-32 Heating:0-30	Cooling:17-32 Heating:0-30	Cooling:17-32 Heating:0-30
Net Weight (Indoor)		kg	24	24	28	28	39	39
Gross Weight (Indoor)		kg	29	29	34	34	43	47

R410A

INVERTER COOLING & HEATING



Outdoor Unit



Voltage Protection



Over-Current Protection



Over-Heat Protection



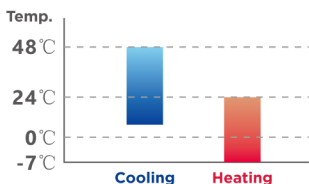
Temperature Protection



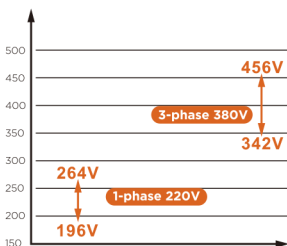
Lack-Phase Protection



Auto Restart



Wide Temperature Ambient Range



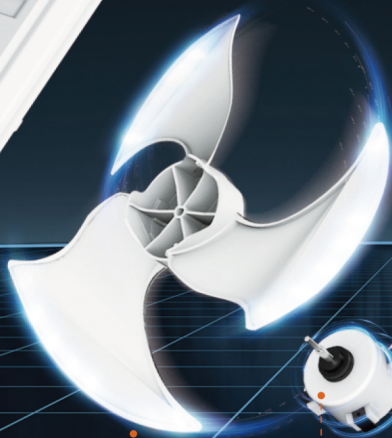
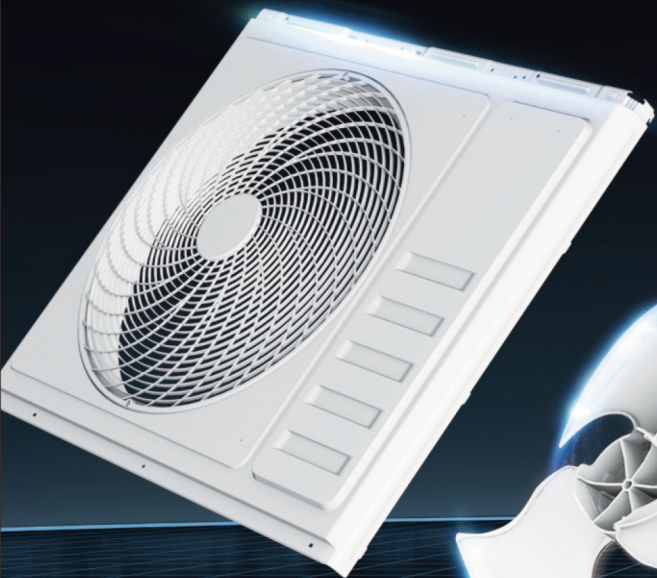
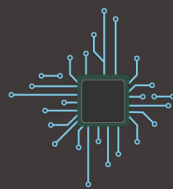
Wide Operation Voltage Range

Outdoor Unit Model			IQ-H181-1/T-O	IQ-H241-1/T-O	IQ-H301-1/T-O	IQ-H361-1/T-O	IQ-H481-3/T-O	IQ-H601-3/T-O
Power Supply	V/Hz/Ph		220-240V~50Hz/1P	220-240V~50Hz/1P	220-240V~50Hz/1P	220-240V~50Hz/1P	380-415V~50Hz/3P	380-415V~50Hz/3P
Voltage Range	V		198~264	198~264	198~264	198~264	342~456	342~456
Max. Current	A		12	15	17	17	9	10
Max. Power Consumption	W		2650	3500	3900	3900	6000	6400
Compressor	/		Rotary	Rotary	Rotary	Rotary	Rotary	Rotary
Air Circulation	m³/h		3000	3000	3600	3600	5000	5600
Sound Pressure	dB(A)		57	53	57	56	57	58
Outdoor	Unit (WxHxD)	mm	780×288×590	780×288×590	845×330×699	910×360×805	910×360×805	1010×410×850
	Packing (WxHxD)	mm	890×385×628	890×385×628	960×430×732	1022×480×835	1022×480×835	1135×530×877
Refrigerant type/Charge	/		R410A/1.0kg	R410A/1.7kg	R410A/1.9kg	R410A/2.05kg	R410A/2.98kg	R410A/2.8kg
Refrigerant Pipe	Gas	Inches	1/2"	1/2"	5/8"	5/8"	5/8"	5/8"
		mm	Φ12.7	Φ12.7	Φ15.88	Φ15.88	Φ15.88	Φ15.88
	Liquid	Inches	1/4"	1/4"	3/8"	3/8"	3/8"	3/8"
		mm	Φ6.35	Φ6.35	Φ9.52	Φ9.52	Φ9.52	Φ9.52
Max. refrigerant pipe length	M		30	30	30	30	50	50
Max. difference in level	M		15	15	15	15	30	30
Ambient temperature range	°C		Cooling: 18-48 Heating: -7-24	Cooling: 18-48 Heating: -7-24	Cooling: 18-48 Heating: -7-24	Cooling: 18-48 Heating: -7-24	Cooling: 18-48 Heating: -7-24	Cooling: 18-48 Heating: -7-24
Net Weight	kg		28	31	43	47	65	75
Gross Weight	kg		30	33	46	51	70	83

Inverter Technology

1. 30% improvement in unit energy efficiency.
2. Fast cooling and heating: Full load output within 90s.
3. $\pm 1^{\circ}\text{C}$ Precise temperature control.

Full DC Inverter Intelligent Control



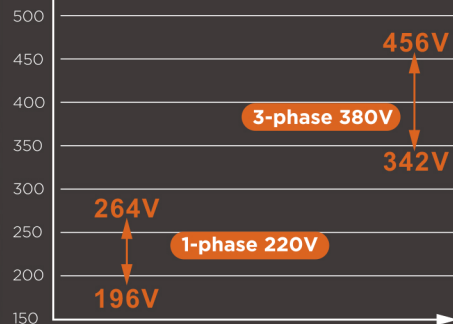
Bionic Fan

Advanced 3D propeller design can enlarge the air volume and reduce the noise.

DC Motor

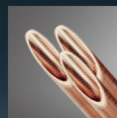


Wide Operation Voltage Range

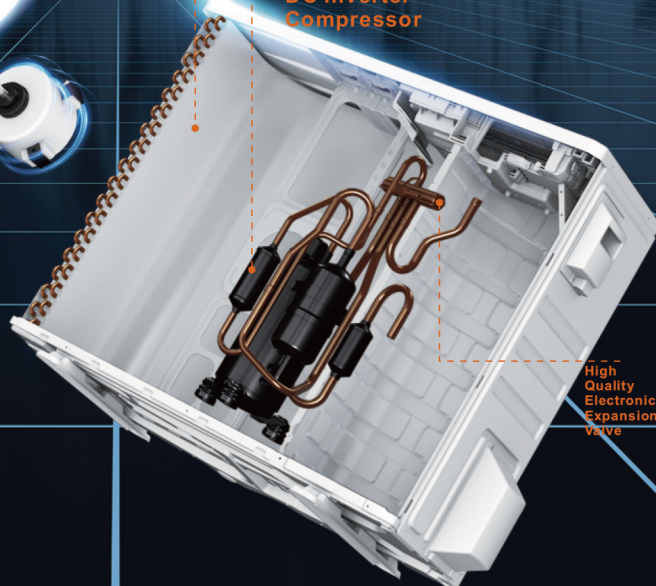


Inner Groove Tube

Copper tube with internal threads will increase the heat transfer area and improve the heat transfer efficiency.



DC Inverter Compressor



High Quality Electronic Expansion Valve

High Energy Efficiency



Voltage Protection



Over-Current Protection



Over-Heat Protection



Temperature Protection



Lack-Phase Protection



Auto Restart