

## 2.2 Operation of APP controller

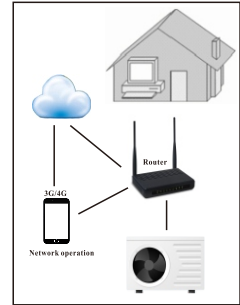
### 2.2.1 Working principle of APP control

\* Requirements for Android System:

1. System version above Android 6.0 .
2. Resolution 480\*800 and above.
3. APK 40M and above, TF card or build-in storage.
4. Requiring the system to have remaining 100MB of storage.

\* Requirements for Iphone IOS System:

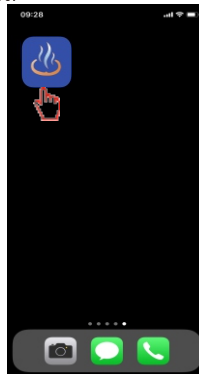
1. For IOS system version 9.0 and above.
2. For Iphone 6 and latter ones.
3. At least 200M of storage remaining in the phone.



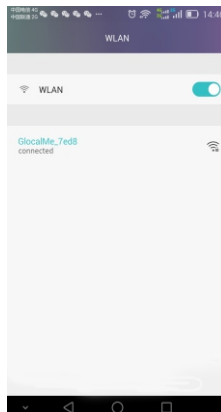
internet connection

### 2.2.2 Set up of the network.

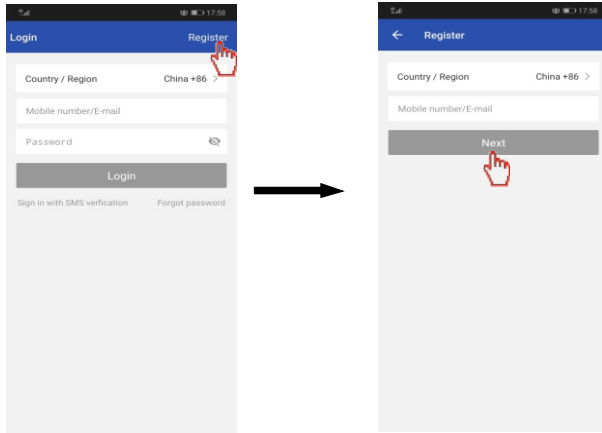
1) Download “ThermWise” and install it.



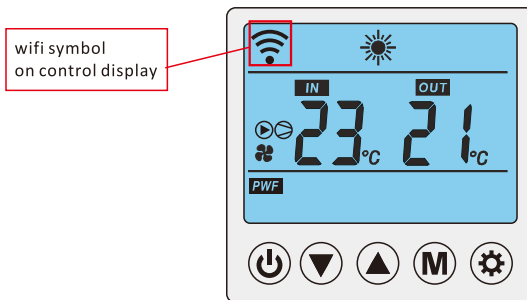
2) Make sure your phone is connected to your WIFI .



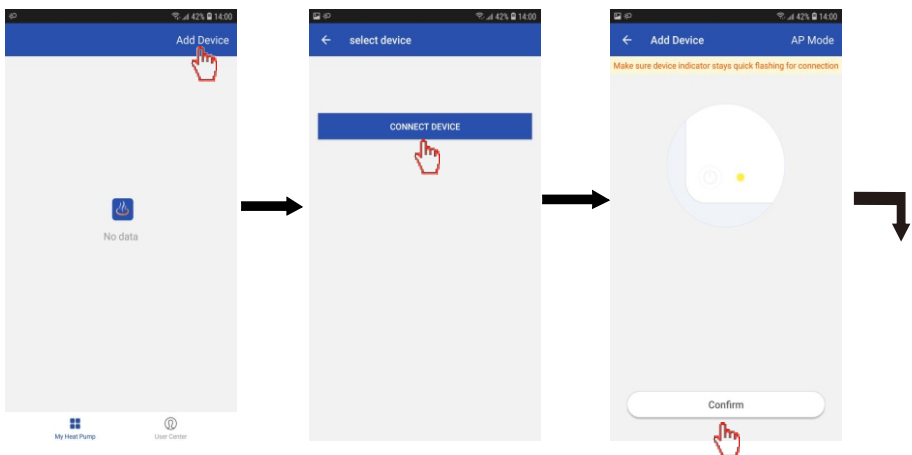
3) Click the “ThermWise” icon and register your account ID.



4) Start the heat pump and press button "▼" and "⚙️" button on the control display together for 5 seconds to activate the control display WIFI. WIFI icon starts blinking and search the WIFI nearby.

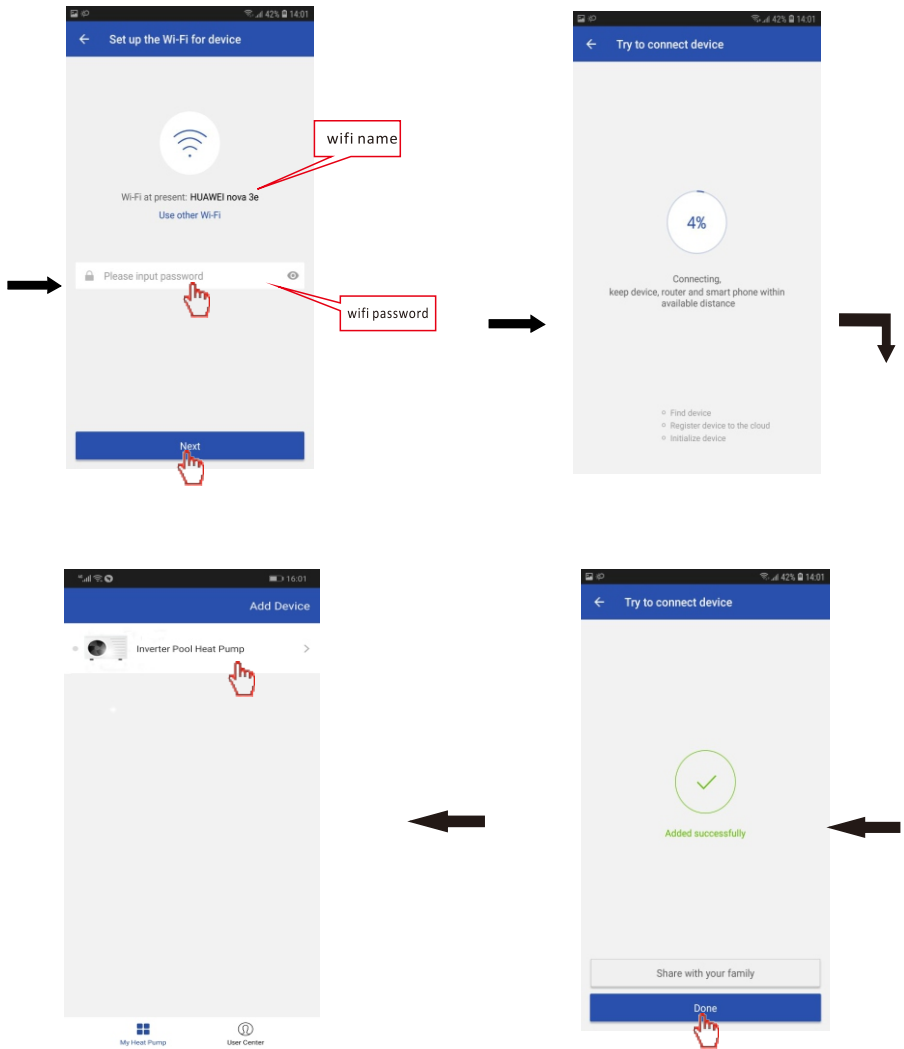


5) Click the “ThermWise” and start to add new device.



With your phone connected WiFi name shown , fill in WiFi password and click “Next”.

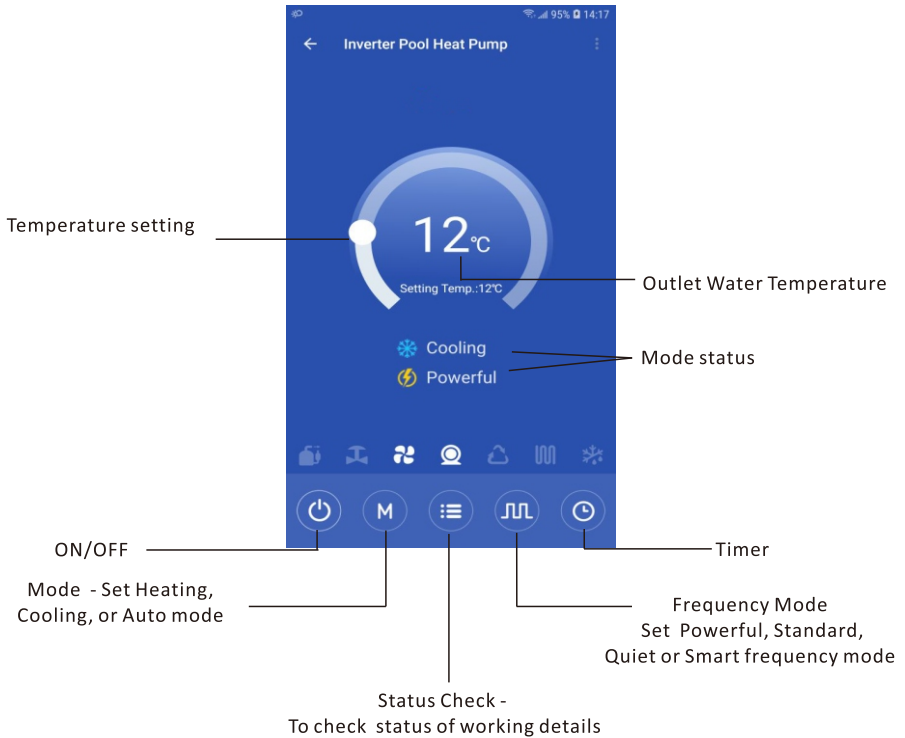
Once the WiFi icon stops flashing , the connection between your phone and control display has been set up.



Now the connection between your heat pump and APP are well set up !

## 2.3 APP operation


1) Illustration of operational page.



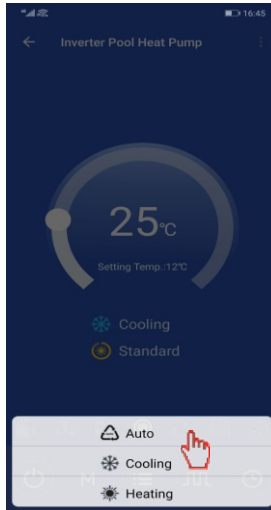
Indicators of main components :

\* The indicated light is on when the related component is working. :

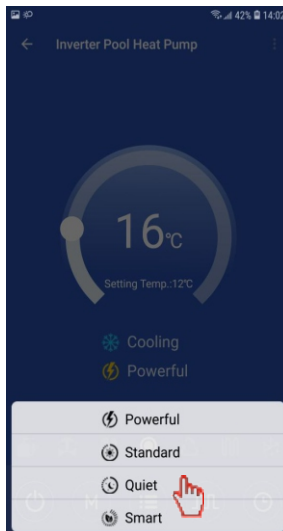


2) Click  Button to turn on/off the unit.

3) Press  to select auto(smart), heating, or cooling mode.



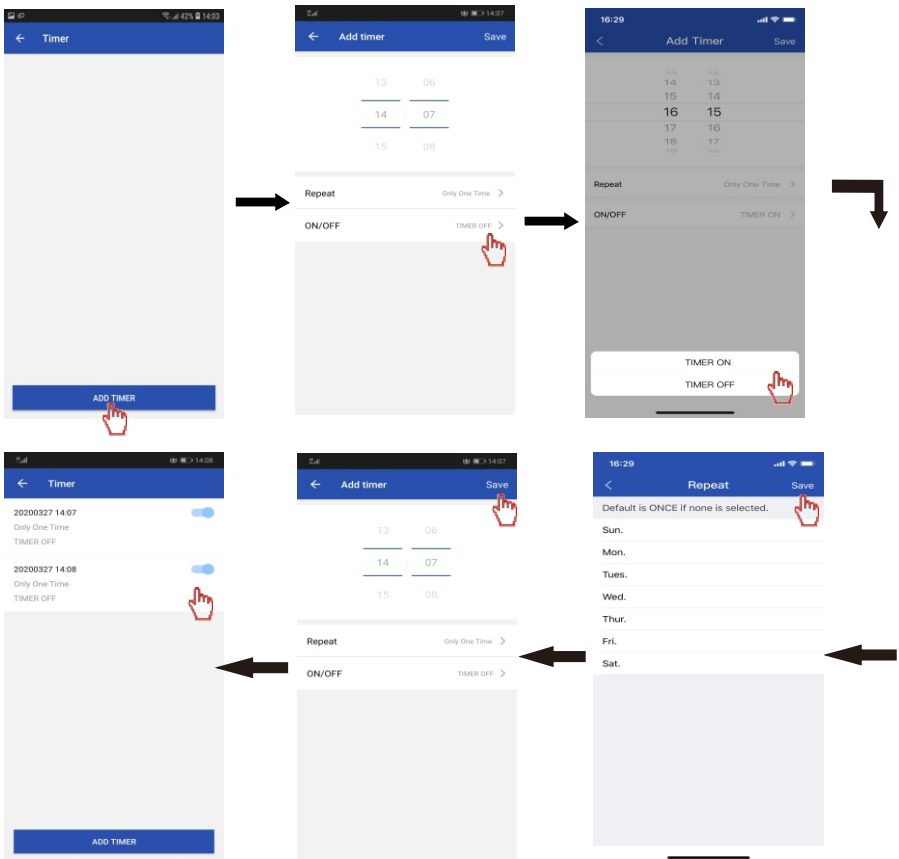
4) Press  to select Powerful, Standard, Quiet or Smart frequency mode.



5) Move up and down to set your desire water temperature.



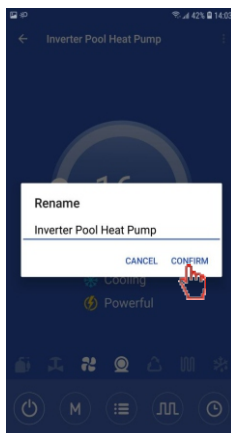
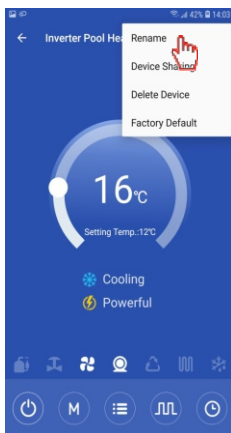
6) Click the  to set "Timer on" & "Timer off";  
 \* Timer setting is only available on the ThermWise.



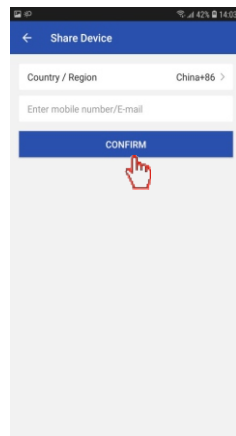
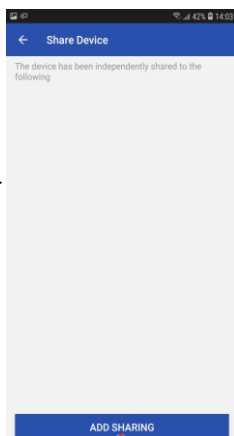
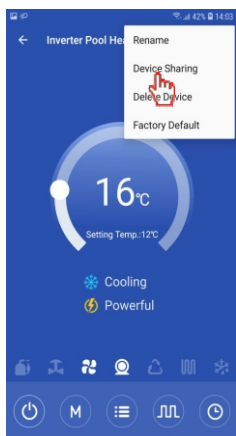
7) Click  and check system measured values of your heat pump.



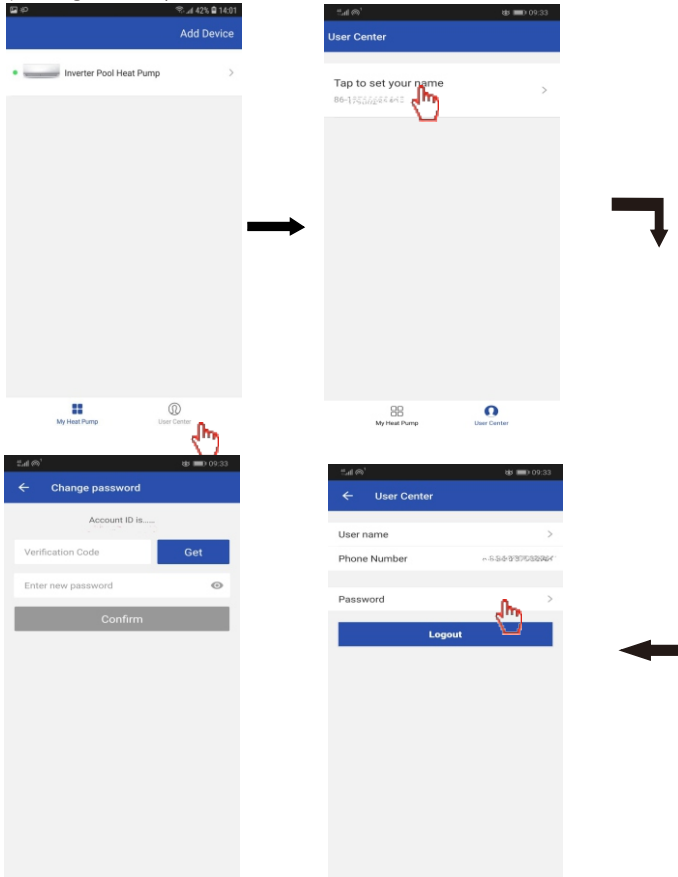
8) Rename the device.



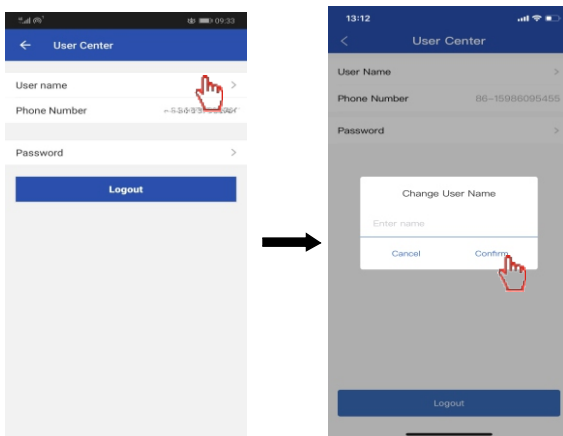
9) Share the device.



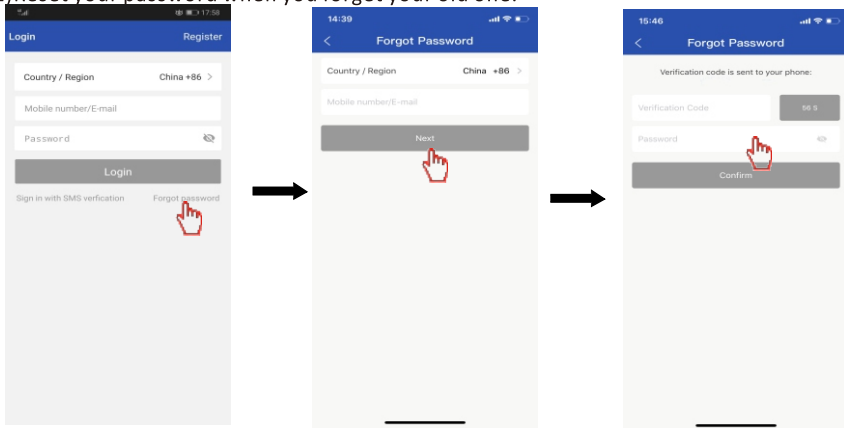
### 10) Change user's password



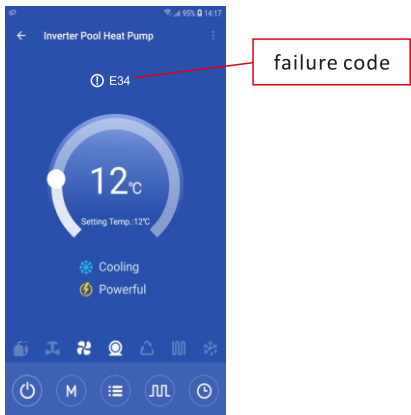
### 11) Change user's name



12) Reset your password when you forget your old one.



13) Please check failure codes on manual or contact your dealer for detailed check.



14) Long press your device and delete your device.

\* You need to add device once again according to manual after you delete device :

